

JC100149

Skypack Pro Emergency

Skypack™ Pro 6ft Single 52W IP20 4000K DALI EM WOP

Features & Benefits

- Intelligent press release buttons for simple installation
- Suspended LED tray for easy installation
- Press fit terminals loop in loop out with multiple position options
- Rear and end conduit entry points
- Plug and play Emergency and Microwave on/off modules
- Flexible cross mount fixing points
- Keyhole BESA mounting points
- Pre-moulded two way cable restraints
- Improved funnel clip in end caps for ease of installation



General Information

Mounting	Surface/Suspended
Environment	Indoor
Color Finish	White
Product Shape	Rectangular
Product Range	Skypack™ Pro
Overall Dimensions	1820 x 73.4 x 70
Length (mm)	1820
Width (mm)	73.4
Height (mm)	70
Product Weight(kg)	2.314
Light Source	LED
Light Source Features	Neutral White
Luminaire Accessories	Suspension kit (JC100160)
Recommended product location	Domestic, Commercial and Industrial Applications
Method of fix	Surface or Suspended

Distance from lighted object	0.3m
IP Rating	IP40 (Surface Mount) IP20 (Suspended)
Origin of manufacturer	Made in China
Warranty	5 Year Warranty including batteries (See Website for terms and conditions)
Dimming Protocol Compatibility	DALI
Driver manufacturer	JCC
LED manufacturer/type	Runlite 2835
Customs Tariff code**	9405119090

Electrical

Voltage Rating	220-240
Primary Running Current(Amp)	0.36A
Inrush current(Amps)	<20A (Half current pulse width 100uS) @230VAC
Operating Frequency Hz	50/60Hz
Secondary running current(mA)	1000
Constant Current or Constant Voltage	CC
Luminaire Circuit Wattage1	52
Class	I
Output Voltage Max/Range (VDC)	9-57
Total Harmonic Distortion (THD)%	Typical: 13% (@230Vac, 100% load)
EMC Compliant (EN55015)	Yes
Power Factor Correction	0.95
Input Electrical Connections	Permanent Live, Switched Live, Earth & Neutral
Dimmable	DALI or Switch dim

Emergency Data

Load Voltage(DC)	9-75
LOR % in Emergency Mode	5
Minimum Battery run time	3
Recharge Time	24 hours
Inverter PFC	0.5

Battery Data

Battery Specification	6.4V 1600mAh
Battery Type	LifePO4
Nominal battery current	220-25mA
Charge Current	250mA
Recharge Time	24 hours
Deep Discharge Protection	Yes
Battery Total Weight(kg)	0.084

Thermals

Operating Temperature Range °C	0°C~50°C
--------------------------------	----------

Performance Data

LED Life (Hours)*	60000
Energy Rating	This product contains a light source of energy efficiency class C
Actual Lumen Output1	6825
Lumens Per Circuit Watt1	131
Color Rendering Index	80-89
CRI: Ra	80
Correlated Colour Temperature1	4000K
Beam Angle °	120
LOR (Light Output Ratio) %	100
Photometry Available	Yes: available on request.

Construction

Primary Material	Steel
Outer Diffuser	Polycarbonate
Driver Housing	Polycarbonate

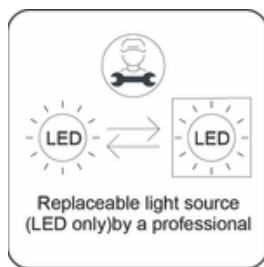
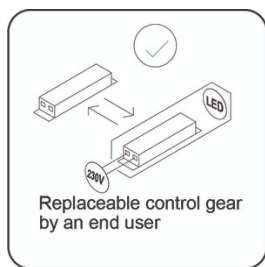
Packaging

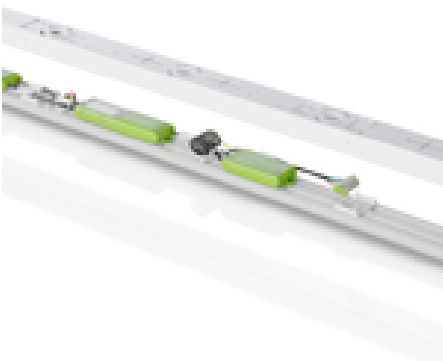
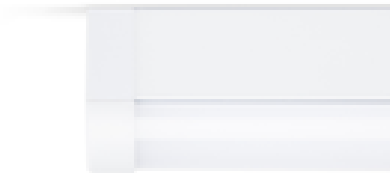
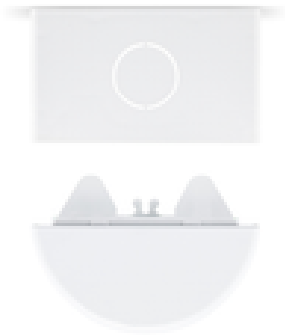
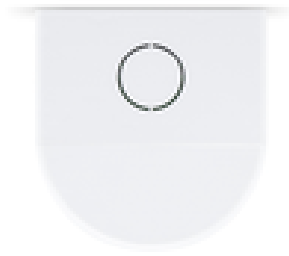
Product carton overall dimensions(cm)	185.5 x 8.5 x 8
Product Packaged Weight(kg)	2.6440
Quantity Per Outer Carton	6
Outer carton(L)- cm	187.00
Outer carton(W)- cm	18.7
Outer carton(H)- cm	25.5
Outer carton Net weight- kg	15.86kg
Outer carton Gross weight- kg	16.83kg
Product Bar Code EAN-13 Number	5052544122545
Outer carton Bar Code ITF-14 Number	15052544122542

Standards & Approvals

Manufactured in accordance to	BS EN 60598:2015, 2-1
CE Marked	Yes
UKCA Marked	Yes
Date code/Purchase order No.	Yes
WEEE symbol	Yes
Certificate Of Conformity	Available on request
Accredited Members	LIA, ISO9001-2015, ISO14001-2015







*Hours life stated is an indication of expected L70 chip and light output calculations when operating in optimum conditions. Product warranty period supports the full product during the term given. The L70 hours expectancy is not correlated with the full product warranty term, nor is it a representation of lumen depreciation during the warranty period.

**JCC Lighting Limited makes every effort to ensure that the Customs Tariff information in this document is timely and accurate. However, it's not possible for us to assure the absolute veracity and completeness of that information, as errors may occur. The placement of any inaccurate tariff information is completely unintentional. JCC Lighting Limited reserves the right, in its sole discretion, to correct any errors or omissions to the tariff code and to make any and all changes contained in this document at any time and without notice. It is the sole responsibility of the importer to ensure that the commodity code advised is correct for the products/goods being supplied by JCC Lighting Limited. JCC Lighting Limited does not assume any

liabilities, losses, costs, and expenses arising out of or related to the importers use of this commodity code or the information related to the import of any JCC Lighting products.

JCC Lighting LTD, Lux Park, Chichester Business Park, City Fields Way, Tangmere, Chichester, West Sussex, PO20 2FT.

Sales: 01243 838999 (8am to 5pm Monday to Friday) Fax: 01243 838998 | sales@jcc.co.uk | www.jcc.co.uk

Company Registration Number: 03044848 | VAT Number: 918544112

This document is uncontrolled if printed, all information is subject to change

Version 117 [26/03/2025]