

JC070261

RadiaLED Rapid Pro Slim Emergency

RadiaLED Rapid Pro Slim 8/12W IP65 3000/4000/5700K 250Ø Ph/Cell
Emergency BLK rim

Features & Benefits

- Wattage selectable, 8W/12W
- Colour selectable, 3000K/4000K/5700K
- Unique, hinged LED gear tray design
- Up to 109 lpcW
- Cross range compatible plug & play emergency, microwave and photocell modules
- For use with RadiaLED® Rapid Pro and RadiaLED® Rapid Pro Slim



General Information

Mounting	Wall/Ceiling
Trade Name	RadiaLED Rapid Pro Slim
Environment	Demanding
Suitable For Zones	Zone 1
Product Group	Bulkheads
Color Finish	Black
Product Shape	Round
Product Range	LED-Surface
IK Rating	08
Overall Dimensions	250Ø x 69.3mm
Height (mm)	69.3
Diameter (mm)	250
Light Source	LED
Light Source Features	3 CCT
Method Of Fix	Screws and Rawl plugs
IP Rating	65

Origin of manufacturer	China
Warranty	5 Year Warranty including battery (See Website for terms and conditions)
Driver Manufacturer	JCC
LED Manufacturer/Type	Juangdong/2835

Electrical

Voltage Rating	220-240
Primary Running Current(Amp)	0.07
Inrush current(Amps)	<20
Operating Frequency Hz	50/60
Secondary running current(mA)	155/240
Constant Current or Constant Voltage	CC
Luminaire Circuit Wattage1	8
Luminaire Circuit Wattage2	12
Class	II
Output Voltage Max/Range (VDC)	40-60
Total Harmonic Distortion (THD)%	<20
EMC Compliant (EN55015)	Yes
Power Factor Correction	0.9
Input Electrical Connections	Switched Live, Unswitched Live, Neutral, Earth (with provision only)
Dimmable	No

Emergency Data

Load Voltage(DC)	9-56
Minimum Battery run time	3 hours
Recharge Time	24 hours

Battery Data

Battery Specification	3.2V 2Ah
Battery Type	LiFePO4
Nominal Battery Current	20mA
Charge Current	130mA
Recharge Time	24 hours

Thermals

Thermal Cut Out	Yes
Operating Temperature Range °C	0 to +50

Performance Data

LED Life (Hours)*	54000
Energy Rating	This product contains a light source of energy efficiency class E

Actual Lumen Output1	800
Actual Lumen Output2	1300
Lumens Per Circuit Watt1	100
Lumens Per Circuit Watt2	108
Standard Deviation Colour Matching - SDCM	2.5 to 5
Color Rendering Index	80-89
CRI: Ra	80
Correlated Colour Temperature1	3000
Correlated Colour Temperature2	4000
Correlated Colour Temperature3	5700
Beam Angle °	120°
LOR (Light Output Ratio) %	100
Photometry Available	Yes

Controls and Sensors

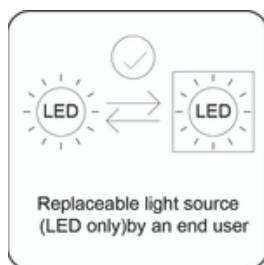
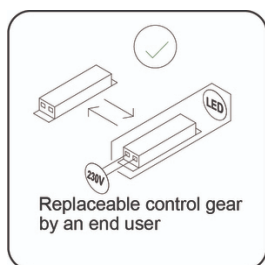
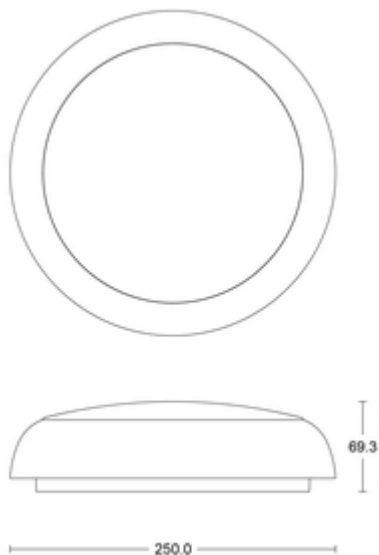
Lux Settings	ON:5 lux/ Off: 55-105lux, ON:10 lux/ Off: 60-110lux,ON:25 lux/ Off: 75-125lux, ON:50 lux/ Off: 100-150lux, ON:100 lux/ Off: 150-250lux, ON:150 lux/ Off: 250-300lux, ON:200 lux/ Off: 250-400lux, Disable
Daylight Sensor (On/Off) (NOT Daylight Harvesting)	Yes

Construction

Primary Material	Polycarbonate
Inner Diffuser	Polycarbonate
Driver Housing	Polycarbonate

Standards & Approvals

Manufactured In Accordance To	BS EN 60598-2-1,2-22
CE Marked	Yes
UKCA Marked	Yes
Date code/Purchase order No.	Yes
WEEE Symbol	Yes
Certificate Of Conformity	Available on request
Accredited Members	LIA, ISO9001-2015, ISO14001-2015



*Hours life stated is an indication of expected L70 chip and light output calculations when operating in optimum conditions. Product warranty period supports the full product during the term given. The L70 hours expectancy is not correlated with the full product warranty term, nor is it a representation of lumen depreciation during the warranty period.

JCC Lighting LTD, Lux Park, Chichester Business Park, City Fields Way, Tangmere, Chichester, West Sussex, PO20 2FT.
 Sales: 01243 838999 (8am to 5pm Monday to Friday) Fax: 01243 838998 | sales@jcc.co.uk | www.jcc.co.uk
 Company Registration Number: 03044848 | VAT Number: 918544112

This document is uncontrolled if printed, all information is subject to change

Version 112 [26/03/2025]