

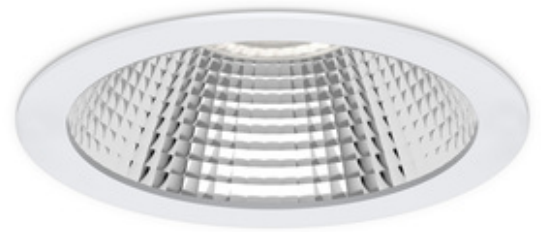
JC5503

CoraLED™ Plus

CoraLED™ Plus Commercial Downlight 18W IP54 3000K/4000K/5700K

Features & Benefits

- 3CCT switchable as standard, 3000K/4000K/5700K
- 13W, 18W and 25W Options
- UGR19 as standard, designed to comply with BS EN 12464-1 lighting of workspace
- Up to 133 LpcW
- IP54 rated
- Low profile, suitable for shallow ceilings
- 60° beam angle with a Cri: of 85
- Non-dimmable flicker free driver
- DALI/1-10V/SW dim and DSI dimmable options
- Suitable for use with JCEM002/JCEM002ST remote emergency packs



General Information

Mounting	Recessed
Environment	Indoors
Suitable For Zones	Zone 2
Product Group	Downlights
Color Finish	White
Product Shape	Round
Product Range	Coral™ Plus
Depth (mm)	60.6
Diameter (mm)	228
Product Weight(kg)	0.5
Light Source	LED
Additional Information	Suitable for use with JCEM002/JCEM002ST emergency packs
Minimum Void Requirement	100mm
Method of fix	Spring clips
Product Aperture Size	Ø200-210mm
IP Rating	IP54
Origin of manufacturer	China
Warranty	5 Year Warranty (See Website for terms and conditions)

LED manufacturer/type	Runlite 2835
Customs Tariff code**	9405119090

Electrical

Voltage Rating	220-240
Primary Running Current(Amp)	0.14
Inrush current(Amps)	16.2
Operating Frequency Hz	50/60Hz
Secondary running current(mA)	450
Constant Current or Constant Voltage	Constant Current
Luminaire Circuit Wattage1	18
Class	II
Output Voltage Max/Range (VDC)	30-40
Total Harmonic Distortion (THD)%	<20
EMC Compliant (EN55015)	Yes
Power Factor Correction	0.9
Input Electrical Connections	Live, neutral
Dimmable	No

Thermals

Thermal Cut Out	Yes
Insulation Coverage	Do not cover with insulation
Minimum Void Requirement	100mm
Operating Temperature Range °C	-20 to +40

Performance Data

LED Life (Hours)*	54000
Energy Rating	This product contains a light source of energy efficiency class D
Actual Lumen Output1	2400
Lumens Per Circuit Watt1	133
Standard Deviation Colour Matching - SDCM	<6
Color Rendering Index	80-89
CRI: Ra	85
Correlated Colour Temperature1	3000
Correlated Colour Temperature2	4000
Correlated Colour Temperature3	5700
Beam Angle °	60
LOR (Light Output Ratio) %	100
Photometry Available	Yes

Construction

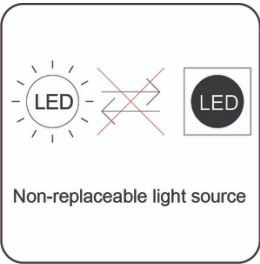
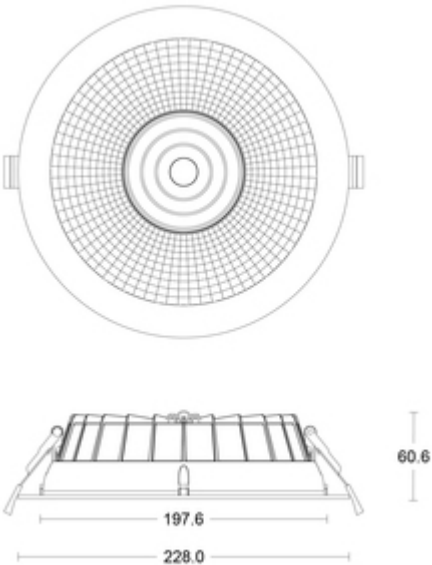
Heat Sink	Aluminium
Driver Housing	Polycarbonate

Packaging

Product carton overall dimensions(cm)	5 x 4 x 13.5
Product Packaged Weight(kg)	0.671
Quantity Per Outer Carton	24
Outer carton(L)- cm	55
Outer carton(W)- cm	53
Outer carton(H)- cm	48
Outer carton Net weight- kg	1.48
Outer carton Gross weight- kg	16.10
Product Bar Code EAN-13 Number	5052544116063
Outer carton Bar Code ITF-14 Number	15052544116107

Standards & Approvals

Manufactured in accordance to	BS EN 60598-2015
CE Marked	Yes
UKCA Marked	Yes
Date code/Purchase order No.	Yes
WEEE symbol	Yes
Certificate Of Conformity	Available on request
Accredited Members	LIA, ISO9001-2015, ISO14001-2015



*Hours life stated is an indication of expected L70 chip and light output calculations when operating in optimum conditions. Product warranty period supports the full product during the term given. The L70 hours expectancy is not correlated with the full product warranty term, nor is it a representation

of lumen depreciation during the warranty period.

**JCC Lighting Limited makes every effort to ensure that the Customs Tariff information in this document is timely and accurate. However, it's not possible for us to assure the absolute veracity and completeness of that information, as errors may occur. The placement of any inaccurate tariff information is completely unintentional. JCC Lighting Limited reserves the right, in its sole discretion, to correct any errors or omissions to the tariff code and to make any and all changes contained in this document at any time and without notice. It is the sole responsibility of the importer to ensure that the commodity code advised is correct for the products/goods being supplied by JCC Lighting Limited. JCC Lighting Limited does not assume any liabilities, losses, costs, and expenses arising out of or related to the importers use of this commodity code or the information related to the import of any JCC Lighting products.

JCC Lighting LTD, Lux Park, Chichester Business Park, City Fields Way, Tangmere, Chichester, West Sussex, PO20 2FT.

Sales: 01243 838999 (8am to 5pm Monday to Friday) Fax: 01243 838998 | sales@jcc.co.uk | www.jcc.co.uk

Company Registration Number: 03044848 | VAT Number: 918544112

This document is uncontrolled if printed, all information is subject to change

Version 204 [26/03/2025]