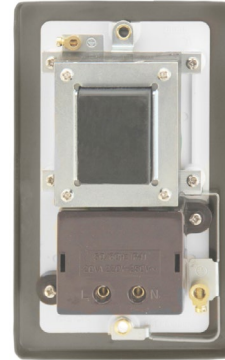


Product Code: VPAB100BK

Luckinslive 389108429

Description: 115V/230V Dual Voltage Shaver Socket Outlet



General Information

Plate Dimensions (mm)	88 (W) x 146 (H) x 8 (D)	
Dimensions With Gasket (mm)	91 (W) x 149 (H) x 9 (D)	
Plate Fixing Centres - Vertical (mm)	120.6	
Style	Victorian	
Finish	Antique Brass	
Insert Colour	Black	
Gasket Colour	Black	
Materials	Front Plate: Stainless Steel Terminals: Brass Contacts: Silver "on-lay" Copper / Brass Earth Strap: Mild Steel	Insert & Rear Housing: Urea Terminal Screws: Steel & Yellow Passivated Internal Busbars: Formed Pressed Brass Gasket: Nylon
Anti Microbial Certified	No	
Operating Voltage (AC)	220-240	Frequency (Hz) 50/60
Load Rating @115V (Va)	20	
Load Rating @230V (Va)	20	
Thermal Protection Device	PTC Resettable Fuse	
Termination Type	Screw	
Terminal Size (mm)	Ø3.5	Terminal Torque Value (Nm) 0.5
Terminal Capacity - Solid (mm²)	2 x 1.5 or 1 x 2.5	
Socket Features	Safety Interlock Shutter	
Twin Earth Terminals	Yes	
Product Marking	Shavers Only, 230V~, 115V~	
Minimum Back Box Depth (mm)	47	
Ingress Protection	IP20	
Operational Temperature (°C)	-5 to +40	
Warranty (Years)	20	Warranty - Electronics (Years) 2

Standards BS EN IEC 61558-1, BS EN 61558-2-5

Additional Information

For cleaning / polishing of products, use only a soft, dry, clean cloth.

This outlet is not continuously rated and therefore not suitable for use as a permanent charging outlet.

CLICK dual voltage shaver outlets incorporate a double wound isolating transformer rated 20Va at 230V or 115V and meets BS EN 61558-2-5:2010 making it safe for use in bathrooms.

PTC resettable fuses increase resistance as temperature increases due to increased flow. PTC resettable fuses are designed to limit unsafe currents while allowing constant safe current levels, resistance will "reset" automatically when the fault is removed and temperature returns to a safe level.

Ensure that the mains supply is isolated before commencing installation and refer to the circuit diagram with the relevant product.

Bare earth cables must always be covered with appropriate sleeving and wired to the earth terminal.

