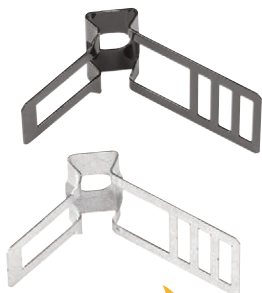
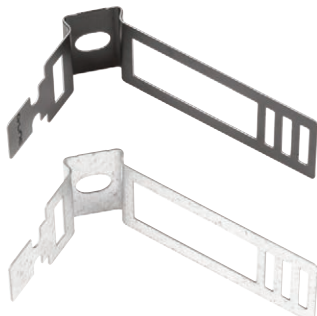


Safe-D Adjustable XLPE/SWA Cable Clips

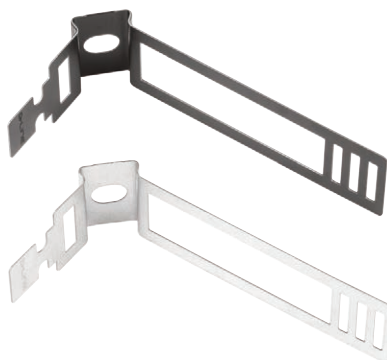
For 10-15mm cables



For 16-21mm cables



For 22-26mm cables



Provides a 3mm stand off from the surface



Simply wrap around the cable, perfect for tight spaces



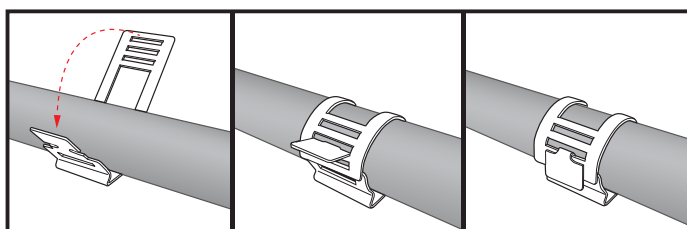
Secure cable with locking tab



Centralised base fixing, gives a neat appearance to installation

For direct-to-surface applications, Safe-D Cable Clips secure cables having diameters ranging between 10mm and 26mm.

The one-piece, labour-saving and stylish design requires only one screw-fixing through base, before the cable is placed in the saddle. The arm can then be simply rolled over the cable, with the end tab passing via a choice of slots... then folded to lock.



- Select the most appropriate slot, then fold-down the tab to achieve a tight fitment around the cable
- Oval shape of base hole enables the Safe-D Cable Clip to be adjusted left or right-side
- 3mm stand-off above base
- Type 1 for cables (or pipes) between 10-15mm diameters
- Type 2 for cables (or pipes) between 16-21mm diameters
- Type 3 for cables (or pipes) between 22-26mm diameters
- >1200°C melting point

Code	Description
SD-CAB10	(L) 75mm x (W) 20mm x (H) Galv
SD-CAB10B	(L) 75mm x (W) 20mm x (H) Black
SD-CAB16	(L) 89mm x (W) 20mm x (H) Galv
SD-CAB16B	(L) 89mm x (W) 20mm x (H) Black
SD-CAB22	(L) 104mm x (W) 20mm x (H) Galv
SD-CAB22B	(L) 104mm x (W) 20mm x (H) Black